

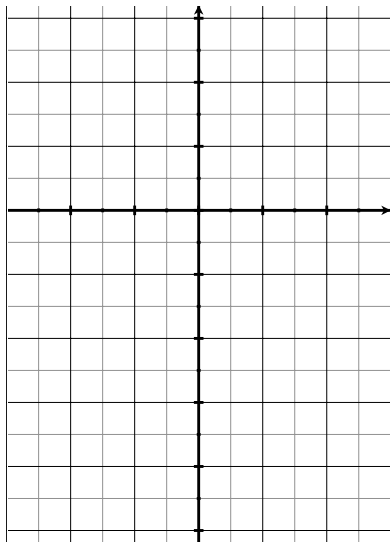
Slope Fields and Euler's Method

10/31/2011

Warm up

Suppose $\frac{dy}{dx} = y - x - 1$. Sketch part of the slope field for the following points:

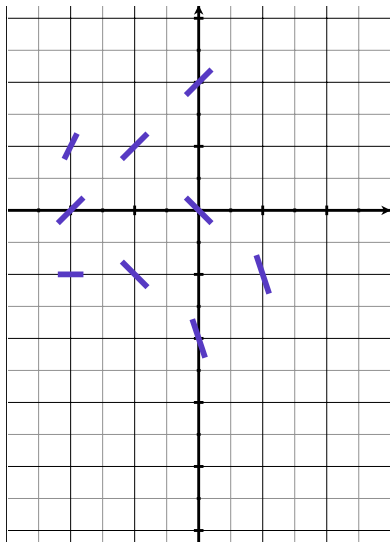
x	y	$\frac{dy}{dx}$
-2	0	
-2	1	
-2	-1	
-1	1	
-1	-1	
0	2	
0	0	
0	-2	
1	-1	



Warm up

Suppose $\frac{dy}{dx} = y - x - 1$. Sketch part of the slope field for the following points:

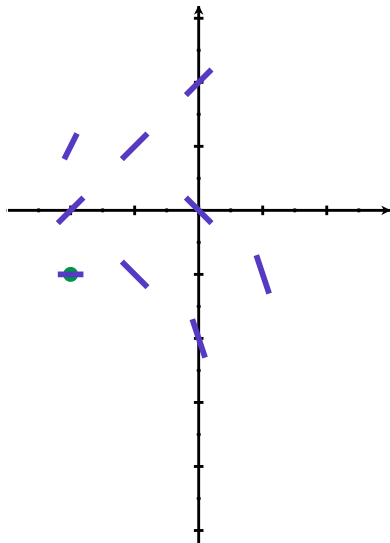
x	y	$\frac{dy}{dx}$
-2	0	1
-2	1	2
-2	-1	0
-1	1	1
-1	-1	-1
0	2	1
0	0	-1
0	-2	-3
1	-1	-3



Warm up

Suppose $\frac{dy}{dx} = y - x - 1$. Sketch part of the slope field for the following points:

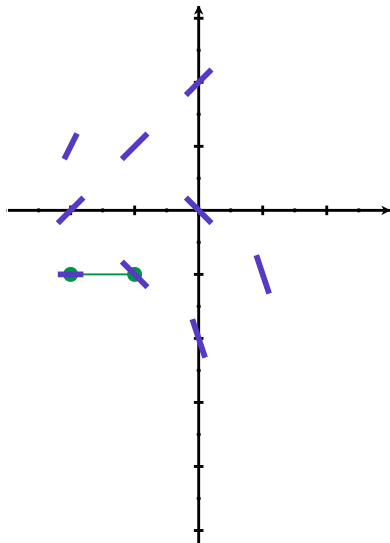
x	y	$\frac{dy}{dx}$
-2	0	1
-2	1	2
-2	-1	0
-1	1	1
-1	-1	-1
0	2	1
0	0	-1
0	-2	-3
1	-1	-3



Warm up

Suppose $\frac{dy}{dx} = y - x - 1$. Sketch part of the slope field for the following points:

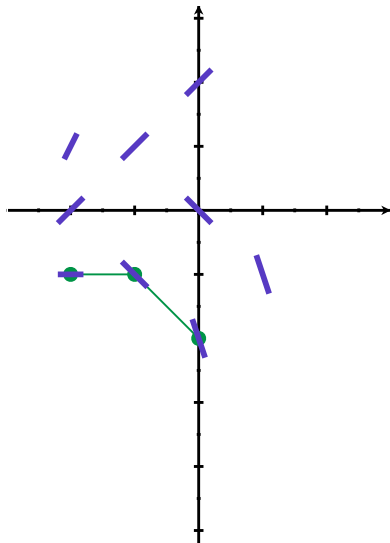
x	y	$\frac{dy}{dx}$
-2	0	1
-2	1	2
-2	-1	0
-1	1	1
-1	-1	-1
0	2	1
0	0	-1
0	-2	-3
1	-1	-3



Warm up

Suppose $\frac{dy}{dx} = y - x - 1$. Sketch part of the slope field for the following points:

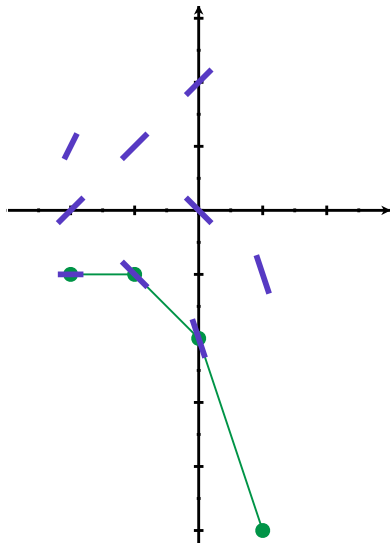
x	y	$\frac{dy}{dx}$
-2	0	1
-2	1	2
-2	-1	0
-1	1	1
-1	-1	-1
0	2	1
0	0	-1
0	-2	-3
1	-1	-3



Warm up

Suppose $\frac{dy}{dx} = y - x - 1$. Sketch part of the slope field for the following points:

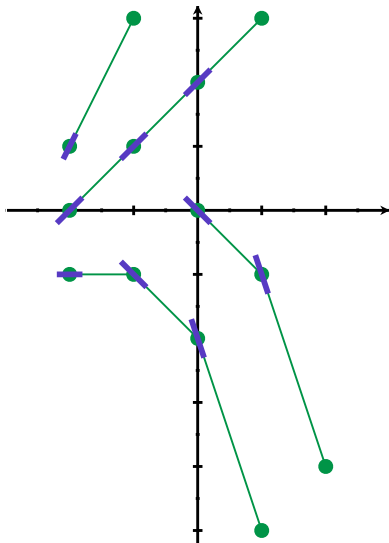
x	y	$\frac{dy}{dx}$
-2	0	1
-2	1	2
-2	-1	0
-1	1	1
-1	-1	-1
0	2	1
0	0	-1
0	-2	-3
1	-1	-3



Warm up

Suppose $\frac{dy}{dx} = y - x - 1$. Sketch part of the slope field for the following points:

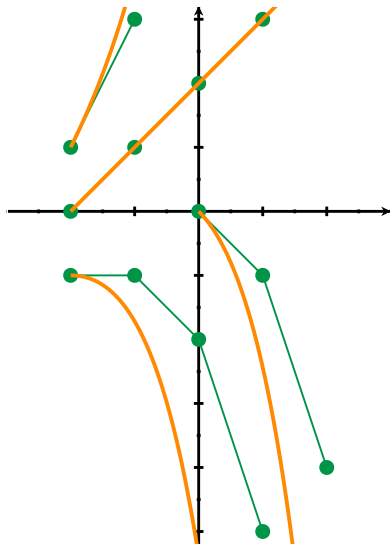
x	y	$\frac{dy}{dx}$
-2	0	1
-2	1	2
-2	-1	0
-1	1	1
-1	-1	-1
0	2	1
0	0	-1
0	-2	-3
1	-1	-3



Warm up

Suppose $\frac{dy}{dx} = y - x - 1$. Sketch part of the slope field for the following points:

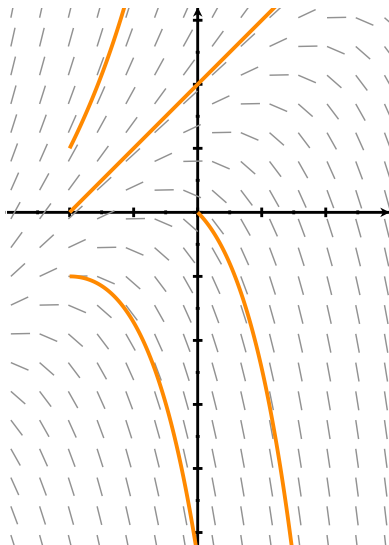
x	y	$\frac{dy}{dx}$
-2	0	1
-2	1	2
-2	-1	0
-1	1	1
-1	-1	-1
0	2	1
0	0	-1
0	-2	-3
1	-1	-3



Warm up

Suppose $\frac{dy}{dx} = y - x - 1$. Sketch part of the slope field for the following points:

x	y	$\frac{dy}{dx}$
-2	0	1
-2	1	2
-2	-1	0
-1	1	1
-1	-1	-1
0	2	1
0	0	-1
0	-2	-3
1	-1	-3



Euler's Method

Assume that you have an IVP that looks like

$$\frac{dy}{dx} = F(x, y), \quad y(x_0) = y_0$$

Pick an increment of x -steps, called Δx .

Euler's Method

Assume that you have an IVP that looks like

$$\frac{dy}{dx} = F(x, y), \quad y(x_0) = y_0$$

Pick an increment of x -steps, called Δx .

Start at (x_0, y_0) , and plot a segment with run Δx and slope $F(x_0, y_0)$. The end is (x_1, y_1) . From each (x_i, y_i) , generate (x_{i+1}, y_{i+1}) by plotting a segment with run Δx and slope $F(x_i, y_i)$.

Euler's Method

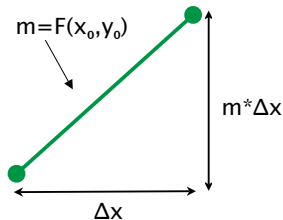
Assume that you have an IVP that looks like

$$\frac{dy}{dx} = F(x, y), \quad y(x_0) = y_0$$

Pick an increment of x -steps, called Δx .

Start at (x_0, y_0) , and plot a segment with run Δx and slope $F(x_0, y_0)$. The end is (x_1, y_1) . From each (x_i, y_i) , generate (x_{i+1}, y_{i+1}) by plotting a segment with run Δx and slope $F(x_i, y_i)$.

$$\begin{aligned}x_{i+1} &= x_i + \Delta x \\y_{i+1} &= y_i + \Delta x * F(x_i, y_i)\end{aligned}$$



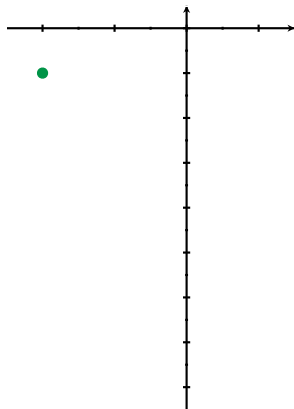
Back to $\frac{dy}{dx} = y - x - 1 = F(x, y)$, $P_0 = (-2, -1)$.

$$x_{i+1} = x_i + \Delta x$$

$$y_{i+1} = y_i + \Delta x * (y_i - x_i - 1)$$

Example: $\Delta x = 1$

i	x_i	y_i	$F(x_i, y_i)$	y_{i+1}
0	-2	-1		
1				
2				
3				



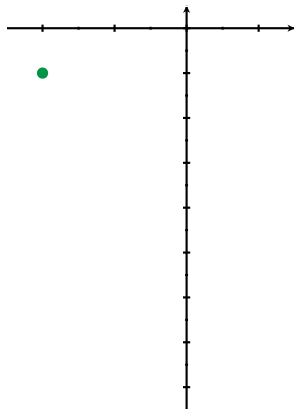
$$\text{Back to } \frac{dy}{dx} = y - x - 1 = F(x, y), \quad P_0 = (-2, -1).$$

$$x_{i+1} = x_i + \Delta x$$

$$y_{i+1} = y_i + \Delta x * (y_i - x_i - 1)$$

Example: $\Delta x = 1$

i	x_i	y_i	$F(x_i, y_i)$	y_{i+1}
0	-2	-1	0	$-1+1*0$
1				
2				
3				



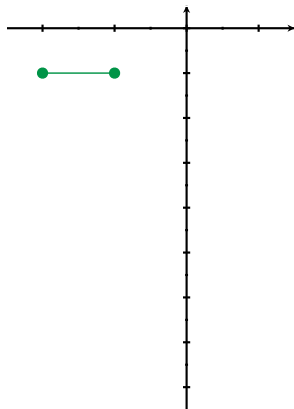
$$\text{Back to } \frac{dy}{dx} = y - x - 1 = F(x, y), \quad P_0 = (-2, -1).$$

$$x_{i+1} = x_i + \Delta x$$

$$y_{i+1} = y_i + \Delta x * (y_i - x_i - 1)$$

Example: $\Delta x = 1$

i	x_i	y_i	$F(x_i, y_i)$	y_{i+1}
0	-2	-1	0	$-1+1*0$
1	-1	-1		
2				
3				



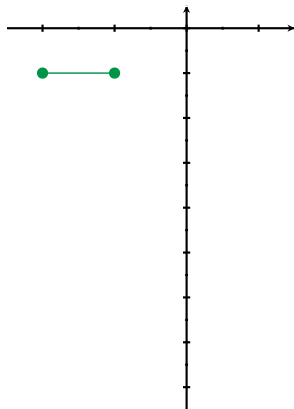
$$\text{Back to } \frac{dy}{dx} = y - x - 1 = F(x, y), \quad P_0 = (-2, -1).$$

$$x_{i+1} = x_i + \Delta x$$

$$y_{i+1} = y_i + \Delta x * (y_i - x_i - 1)$$

Example: $\Delta x = 1$

i	x_i	y_i	$F(x_i, y_i)$	y_{i+1}
0	-2	-1	0	$-1+1*0$
1	-1	-1	-1	$-1+1*(-1)$
2				
3				



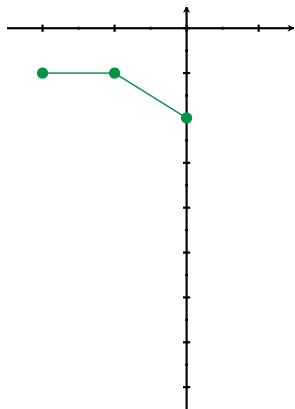
$$\text{Back to } \frac{dy}{dx} = y - x - 1 = F(x, y), \quad P_0 = (-2, -1).$$

$$x_{i+1} = x_i + \Delta x$$

$$y_{i+1} = y_i + \Delta x * (y_i - x_i - 1)$$

Example: $\Delta x = 1$

i	x_i	y_i	$F(x_i, y_i)$	y_{i+1}
0	-2	-1	0	$-1+1*0$
1	-1	-1	-1	$-1+1*(-1)$
2	0	-2		
3				



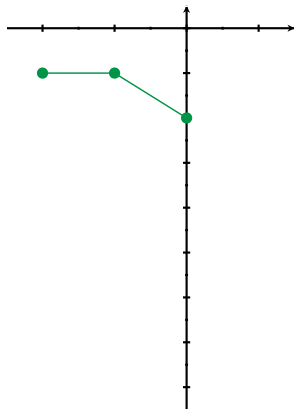
$$\text{Back to } \frac{dy}{dx} = y - x - 1 = F(x, y), \quad P_0 = (-2, -1).$$

$$x_{i+1} = x_i + \Delta x$$

$$y_{i+1} = y_i + \Delta x * (y_i - x_i - 1)$$

Example: $\Delta x = 1$

i	x_i	y_i	$F(x_i, y_i)$	y_{i+1}
0	-2	-1	0	$-1+1*0$
1	-1	-1	-1	$-1+1*(-1)$
2	0	-2	-3	$-2+1*(-3)$
3				



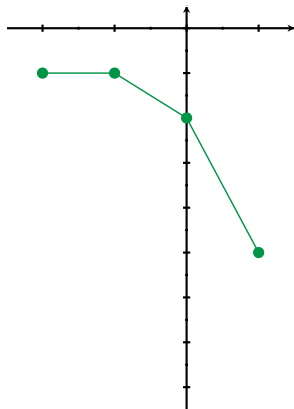
$$\text{Back to } \frac{dy}{dx} = y - x - 1 = F(x, y), \quad P_0 = (-2, -1).$$

$$x_{i+1} = x_i + \Delta x$$

$$y_{i+1} = y_i + \Delta x * (y_i - x_i - 1)$$

Example: $\Delta x = 1$

i	x_i	y_i	$F(x_i, y_i)$	y_{i+1}
0	-2	-1	0	$-1+1*0$
1	-1	-1	-1	$-1+1*(-1)$
2	0	-2	-3	$-2+1*(-3)$
3	1	-5		



$$\Delta x = 1, y_3 = -5$$

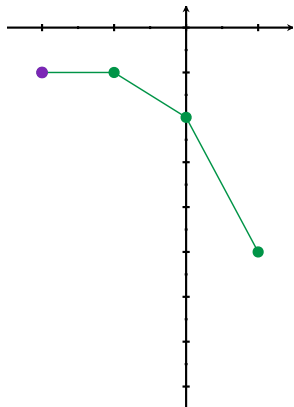
Back to $\frac{dy}{dx} = y - x - 1 = F(x, y)$, $P_0 = (-2, -1)$.

$$x_{i+1} = x_i + \Delta x$$

$$y_{i+1} = y_i + \Delta x * (y_i - x_i - 1)$$

Example: $\Delta x = 1/2$

i	x_i	y_i	$F(x_i, y_i)$	y_{i+1}
0	-2	-1		
1				
2				
3				



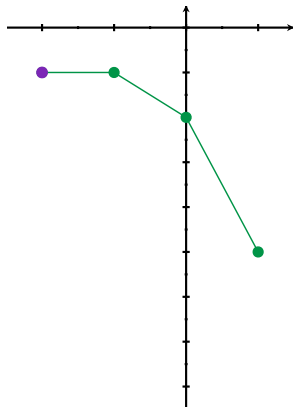
$$\Delta x = 1, y_3 = -5$$

Back to $\frac{dy}{dx} = y - x - 1 = F(x, y)$, $P_0 = (-2, -1)$.

$$x_{i+1} = x_i + \Delta x$$
$$y_{i+1} = y_i + \Delta x * (y_i - x_i - 1)$$

Example: $\Delta x = 1/2$

i	x_i	y_i	$F(x_i, y_i)$	y_{i+1}
0	-2	-1	0	$-1 + \frac{1}{2} * 0$
1				
2				
3				



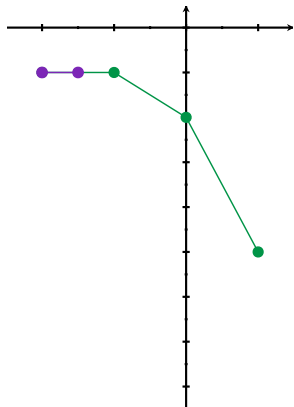
$\Delta x = 1, y_3 = -5$

Back to $\frac{dy}{dx} = y - x - 1 = F(x, y)$, $P_0 = (-2, -1)$.

$$x_{i+1} = x_i + \Delta x$$
$$y_{i+1} = y_i + \Delta x * (y_i - x_i - 1)$$

Example: $\Delta x = 1/2$

i	x_i	y_i	$F(x_i, y_i)$	y_{i+1}
0	-2	-1	0	$-1 + \frac{1}{2} * 0$
1	$-\frac{3}{2}$	-1		
2				
3				



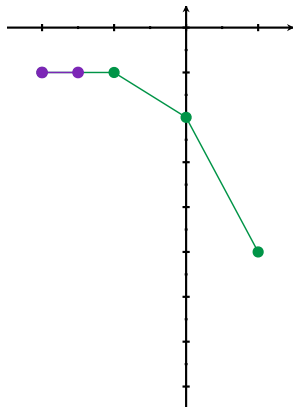
$\Delta x = 1, y_3 = -5$

Back to $\frac{dy}{dx} = y - x - 1 = F(x, y)$, $P_0 = (-2, -1)$.

$$x_{i+1} = x_i + \Delta x$$
$$y_{i+1} = y_i + \Delta x * (y_i - x_i - 1)$$

Example: $\Delta x = 1/2$

i	x_i	y_i	$F(x_i, y_i)$	y_{i+1}
0	-2	-1	0	$-1 + \frac{1}{2} * 0$
1	$-\frac{3}{2}$	-1	$-\frac{1}{2}$	$-1 + \frac{1}{2} * (-\frac{1}{2})$
2				
3				



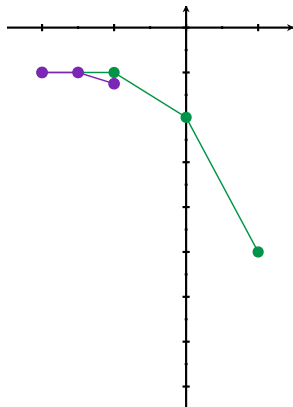
$$\Delta x = 1, y_3 = -5$$

Back to $\frac{dy}{dx} = y - x - 1 = F(x, y)$, $P_0 = (-2, -1)$.

$$x_{i+1} = x_i + \Delta x$$
$$y_{i+1} = y_i + \Delta x * (y_i - x_i - 1)$$

Example: $\Delta x = 1/2$

i	x_i	y_i	$F(x_i, y_i)$	y_{i+1}
0	-2	-1	0	$-1 + \frac{1}{2} * 0$
1	$-\frac{3}{2}$	-1	$-\frac{1}{2}$	$-1 + \frac{1}{2} * (-\frac{1}{2})$
2	-1	$-\frac{5}{4}$		
3				



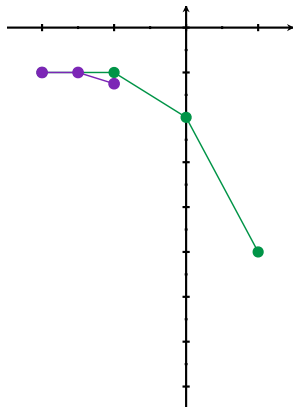
$\Delta x = 1, y_3 = -5$

Back to $\frac{dy}{dx} = y - x - 1 = F(x, y)$, $P_0 = (-2, -1)$.

$$x_{i+1} = x_i + \Delta x$$
$$y_{i+1} = y_i + \Delta x * (y_i - x_i - 1)$$

Example: $\Delta x = 1/2$

i	x_i	y_i	$F(x_i, y_i)$	y_{i+1}
0	-2	-1	0	$-1 + \frac{1}{2} * 0$
1	$-\frac{3}{2}$	-1	$-\frac{1}{2}$	$-1 + \frac{1}{2} * (-\frac{1}{2})$
2	-1	$-\frac{5}{4}$	$-\frac{5}{4}$	$-\frac{5}{4} + \frac{1}{2} * (-\frac{5}{4})$
3				



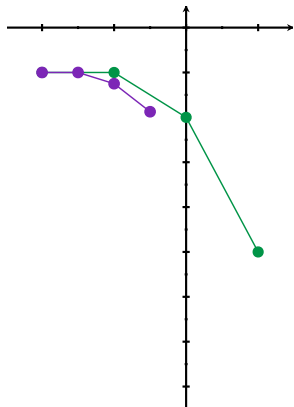
$\Delta x = 1, y_3 = -5$

Back to $\frac{dy}{dx} = y - x - 1 = F(x, y)$, $P_0 = (-2, -1)$.

$$x_{i+1} = x_i + \Delta x$$
$$y_{i+1} = y_i + \Delta x * (y_i - x_i - 1)$$

Example: $\Delta x = 1/2$

i	x_i	y_i	$F(x_i, y_i)$	y_{i+1}
0	-2	-1	0	$-1 + \frac{1}{2} * 0$
1	$-\frac{3}{2}$	-1	$-\frac{1}{2}$	$-1 + \frac{1}{2} * (-\frac{1}{2})$
2	-1	$-\frac{5}{4}$	$-\frac{5}{4}$	$-\frac{5}{4} + \frac{1}{2} * (-\frac{5}{4})$
3	$-\frac{1}{2}$	$-\frac{15}{8}$		



$\Delta x = 1, y_3 = -5$

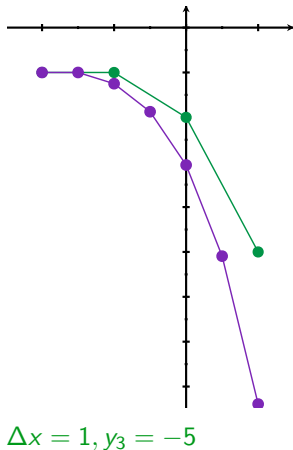
$$\text{Back to } \frac{dy}{dx} = y - x - 1 = F(x, y), \quad P_0 = (-2, -1).$$

$$x_{i+1} = x_i + \Delta x$$

$$y_{i+1} = y_i + \Delta x * (y_i - x_i - 1)$$

Example: $\Delta x = 1/2$

i	x_i	y_i	$F(x_i, y_i)$	y_{i+1}
0	-2	-1	0	$-1 + \frac{1}{2} * 0$
1	$-\frac{3}{2}$	-1	$-\frac{1}{2}$	$-1 + \frac{1}{2} * (-\frac{1}{2})$
2	-1	$-\frac{5}{4}$	$-\frac{5}{4}$	$-\frac{5}{4} + \frac{1}{2} * (-\frac{5}{4})$
3	$-\frac{1}{2}$	$-\frac{15}{8}$	$-\frac{19}{8}$	$-\frac{15}{8} + \frac{1}{2} * (-\frac{19}{8})$
4	0	-3.0625	-4.0625	
5	$\frac{1}{2}$	-5.0938	-6.5938	
6	1	$-8.3906 = y_6$		



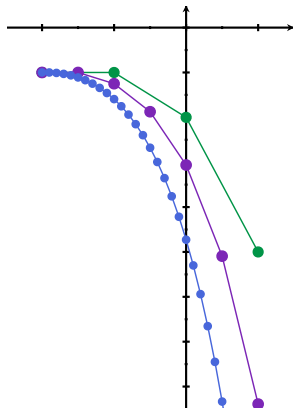
Back to $\frac{dy}{dx} = y - x - 1 = F(x, y)$, $P_0 = (-2, -1)$.

$$x_{i+1} = x_i + \Delta x$$

$$y_{i+1} = y_i + \Delta x * (y_i - x_i - 1)$$

Example: $\Delta x = 1/2$

i	x_i	y_i	$F(x_i, y_i)$	y_{i+1}
0	-2	-1	0	$-1 + \frac{1}{2} * 0$
1	$-\frac{3}{2}$	-1	$-\frac{1}{2}$	$-1 + \frac{1}{2} * (-\frac{1}{2})$
2	-1	$-\frac{5}{4}$	$-\frac{5}{4}$	$-\frac{5}{4} + \frac{1}{2} * (-\frac{5}{4})$
3	$-\frac{1}{2}$	$-\frac{15}{8}$	$-\frac{19}{8}$	$-\frac{15}{8} + \frac{1}{2} * (-\frac{19}{8})$
4	0	-3.0625	-4.0625	
5	$\frac{1}{2}$	-5.0938	-6.5938	
6	1	$-8.3906 = y_6$		



$$\Delta x = 1, y_3 = -5$$

$$\Delta x = .1, y_{30} = -14.449$$

Back to $\frac{dy}{dx} = y - x - 1 = F(x, y)$, $P_0 = (-2, -1)$.

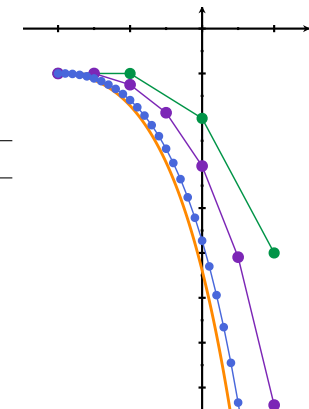
$$x_{i+1} = x_i + \Delta x$$

$$y_{i+1} = y_i + \Delta x * (y_i - x_i - 1)$$

Example: $\Delta x = 1/2$

i	x_i	y_i	$F(x_i, y_i)$	y_{i+1}
0	-2	-1	0	$-1 + \frac{1}{2} * 0$
1	$-\frac{3}{2}$	-1	$-\frac{1}{2}$	$-1 + \frac{1}{2} * (-\frac{1}{2})$
2	-1	$-\frac{5}{4}$	$-\frac{5}{4}$	$-\frac{5}{4} + \frac{1}{2} * (-\frac{5}{4})$
3	$-\frac{1}{2}$	$-\frac{15}{8}$	$-\frac{19}{8}$	$-\frac{15}{8} + \frac{1}{2} * (-\frac{19}{8})$
4	0	-3.0625	-4.0625	
5	$\frac{1}{2}$	-5.0938	-6.5938	
6	1	$-8.3906 = y_6$		

Actual solution: $y = -e^{x+2} + x + 2$,



$\Delta x = 1, y_3 = -5$

$\Delta x = .1, y_{30} = -14.449$

$y(1) \approx -17.0855$

Spreadsheet set up:

in cell...	A1	B1	C1	D1	A2	B2	C2	F2
put...	i	x_i	y_i	m_i	0	x_0	y_0	Δx

(In the last example, x_0 was -2 and y_0 was -1 and Δx was 1, $\frac{1}{2}, \dots$)

in cell...	D2	B3	C3
put...	$=F(B2, C2)$	$=B2+\$F\2	$=C2+\$F\$2*D2$
		$x_{i+1} = x_i + \Delta x$	$y_{i+1} = y_i + \Delta x * m_i$

(In the last example, $F(B2, C2)$ was $C2 - B2 - 1$)

Another example

If $\frac{dy}{dx} = \frac{y^2 + 3y}{x + 4}$ and $y(0) = -1$, what is $y(3)$?

Another example

If $\frac{dy}{dx} = \frac{y^2 + 3y}{x + 4}$ and $y(0) = -1$, what is $y(3)$?

Can I just solve? Separate...

$$\int \frac{1}{y^2 + 3y} dy = \int \frac{1}{x + 4} dx$$

Another example

If $\frac{dy}{dx} = \frac{y^2 + 3y}{x + 4}$ and $y(0) = -1$, what is $y(3)$?

Can I just solve? Separate...

$$??? = \int \frac{1}{y^2 + 3y} dy = \int \frac{1}{x + 4} dx = \ln |x + 4| + C$$

Another example

If $\frac{dy}{dx} = \frac{y^2 + 3y}{x + 4}$ and $y(0) = -1$, what is $y(3)$?

Can I just solve? Separate...

$$??? = \int \frac{1}{y^2 + 3y} dy = \int \frac{1}{x + 4} dx = \ln |x + 4| + C$$

Estimate! Try $\Delta x = 1$

Another example

If $\frac{dy}{dx} = \frac{y^2 + 3y}{x + 4}$ and $y(0) = -1$, what is $y(3)$?

Can I just solve? Separate...

$$??? = \int \frac{1}{y^2 + 3y} dy = \int \frac{1}{x + 4} dx = \ln |x + 4| + C$$

Estimate! Try $\Delta x = 1$

$x_0 = 1$, $y_0 = -1$

$m_0 =$

$x_1 =$

$y_1 =$

$m_1 =$

$x_2 =$

$y_2 =$

$m_2 =$

$x_3 =$

$y_3 =$

Another example

If $\frac{dy}{dx} = \frac{y^2 + 3y}{x + 4}$ and $y(0) = -1$, what is $y(3)$?

Can I just solve? Separate...

$$??? = \int \frac{1}{y^2 + 3y} dy = \int \frac{1}{x + 4} dx = \ln |x + 4| + C$$

Estimate! Try $\Delta x = 1$

$$x_0 = 1, y_0 = -1$$

$$m_0 = \frac{(-1)^2 + 3(-1)}{0+4} = -0.5$$

$$x_1 = \quad y_1 =$$

$$m_1 =$$

$$x_2 = \quad y_2 =$$

$$m_2 =$$

$$x_3 =$$

$$y_3 =$$

Another example

If $\frac{dy}{dx} = \frac{y^2 + 3y}{x + 4}$ and $y(0) = -1$, what is $y(3)$?

Can I just solve? Separate...

$$??? = \int \frac{1}{y^2 + 3y} dy = \int \frac{1}{x + 4} dx = \ln |x + 4| + C$$

Estimate! Try $\Delta x = 1$

$$x_0 = 1, y_0 = -1$$

$$m_0 = \frac{(-1)^2 + 3(-1)}{0+4} = -0.5$$

$$x_1 = 0 + 1 = 1 \quad y_1 = -1 + 1 * (-0.5) = -1.5$$

$$m_1 =$$

$$x_2 =$$

$$y_2 =$$

$$m_2 =$$

$$x_3 =$$

$$y_3 =$$

Another example

If $\frac{dy}{dx} = \frac{y^2 + 3y}{x + 4}$ and $y(0) = -1$, what is $y(3)$?

Can I just solve? Separate...

$$??? = \int \frac{1}{y^2 + 3y} dy = \int \frac{1}{x + 4} dx = \ln |x + 4| + C$$

Estimate! Try $\Delta x = 1$

$$x_0 = 1, y_0 = -1$$

$$m_0 = \frac{(-1)^2 + 3(-1)}{0+4} = -0.5$$

$$x_1 = 0 + 1 = 1 \quad y_1 = -1 + 1 * (-0.5) = -1.5$$

$$m_1 = \frac{(-1.5)^2 + 3(-1.5)}{1+4} = -0.45$$

$$x_2 = \quad y_2 =$$

$$m_2 =$$

$$x_3 =$$

$$y_3 =$$

Another example

If $\frac{dy}{dx} = \frac{y^2 + 3y}{x + 4}$ and $y(0) = -1$, what is $y(3)$?

Can I just solve? Separate...

$$??? = \int \frac{1}{y^2 + 3y} dy = \int \frac{1}{x + 4} dx = \ln |x + 4| + C$$

Estimate! Try $\Delta x = 1$

$$x_0 = 1, y_0 = -1$$

$$m_0 = \frac{(-1)^2 + 3(-1)}{0+4} = -0.5$$

$$x_1 = 0 + 1 = 1 \quad y_1 = -1 + 1 * (-0.5) = -1.5$$

$$m_1 = \frac{(-1.5)^2 + 3(-1.5)}{1+4} = -0.45$$

$$x_2 = 1 + 1 = 2 \quad y_2 = -1.5 + 1 * (-0.45) = -1.95$$

$$m_2 =$$

$$x_3 =$$

$$y_3 =$$

Another example

If $\frac{dy}{dx} = \frac{y^2 + 3y}{x + 4}$ and $y(0) = -1$, what is $y(3)$?

Can I just solve? Separate...

$$??? = \int \frac{1}{y^2 + 3y} dy = \int \frac{1}{x + 4} dx = \ln |x + 4| + C$$

Estimate! Try $\Delta x = 1$

$$x_0 = 1, y_0 = -1$$

$$m_0 = \frac{(-1)^2 + 3(-1)}{0+4} = -0.5$$

$$x_1 = 0 + 1 = 1 \quad y_1 = -1 + 1 * (-0.5) = -1.5$$

$$m_1 = \frac{(-1.5)^2 + 3(-1.5)}{1+4} = -0.45$$

$$x_2 = 1 + 1 = 2 \quad y_2 = -1.5 + 1 * (-0.45) = -1.95$$

$$m_2 = \frac{(-1.95)^2 + 3(-1.95)}{2+4} = -0.34125 \quad x_3 =$$

$$y_3 =$$

Another example

If $\frac{dy}{dx} = \frac{y^2 + 3y}{x + 4}$ and $y(0) = -1$, what is $y(3)$?

Can I just solve? Separate...

$$??? = \int \frac{1}{y^2 + 3y} dy = \int \frac{1}{x + 4} dx = \ln |x + 4| + C$$

Estimate! Try $\Delta x = 1$

$$x_0 = 1, y_0 = -1$$

$$m_0 = \frac{(-1)^2 + 3(-1)}{0+4} = -0.5$$

$$x_1 = 0 + 1 = 1 \quad y_1 = -1 + 1 * (-0.5) = -1.5$$

$$m_1 = \frac{(-1.5)^2 + 3(-1.5)}{1+4} = -0.45$$

$$x_2 = 1 + 1 = 2 \quad y_2 = -1.5 + 1 * (-0.45) = -1.95$$

$$m_2 = \frac{(-1.95)^2 + 3(-1.95)}{2+4} = -0.34125$$

$$x_3 = 2 + 1 = 3$$

$$y_3 = -1.95 + 1 * (-0.34125) = \boxed{-2.29125}$$

i	x_i	y_i	m_i
0	0	-1	-0.5
1	1	-1.5	-0.45
2	2	-1.95	-0.34125
3	3	-2.29125	

Dx
1

i	x_i	y_i	m_i
0	0	-1	-0.5
1	0.5	-1.25	-0.4861111111
2	1	-1.493055556	-0.449990355
3	1.5	-1.718050733	-0.40044616
4	2	-1.918273813	-0.34584117
5	2.5	-2.091194398	-0.292382951
6	3	-2.237385873	

Dx 0.5

i	x _i	y _i	m _i
0	0	-1	-0.5
1	0.1	-1.05	-0.499390244
2	0.2	-1.099939024	-0.497607432
3	0.3	-1.149699768	-0.494718546
4	0.4	-1.199171622	-0.490795974
5	0.5	-1.24825122	-0.485916123
6	0.6	-1.296842832	-0.480158079
7	0.7	-1.34485864	-0.473602374
8	0.8	-1.392218877	-0.466329839
9	0.9	-1.438851861	-0.458420593
10	1	-1.48469392	-0.449953145
11	1.1	-1.529689235	-0.441003637
12	1.2	-1.573789599	-0.431645211
13	1.3	-1.61695412	-0.421947497
14	1.4	-1.659148869	-0.411976229
15	1.5	-1.700346492	-0.401792961
16	1.6	-1.740525788	-0.391454883
17	1.7	-1.779671277	-0.381014733
18	1.8	-1.81777275	-0.370520772
19	1.9	-1.854824827	-0.360016838
20	2	-1.890826511	-0.34954244
21	2.1	-1.925780755	-0.33913291
22	2.2	-1.959694046	-0.328819578
23	2.3	-1.992576004	-0.318629981
24	2.4	-2.024439002	-0.308588083
25	2.5	-2.05529781	-0.298714514
26	2.6	-2.085169262	-0.289026808
27	2.7	-2.114071942	-0.279539649
28	2.8	-2.142025907	-0.270265108
29	2.9	-2.169052418	-0.261212879
30	3	-2.195173706	

Dx
0.1

